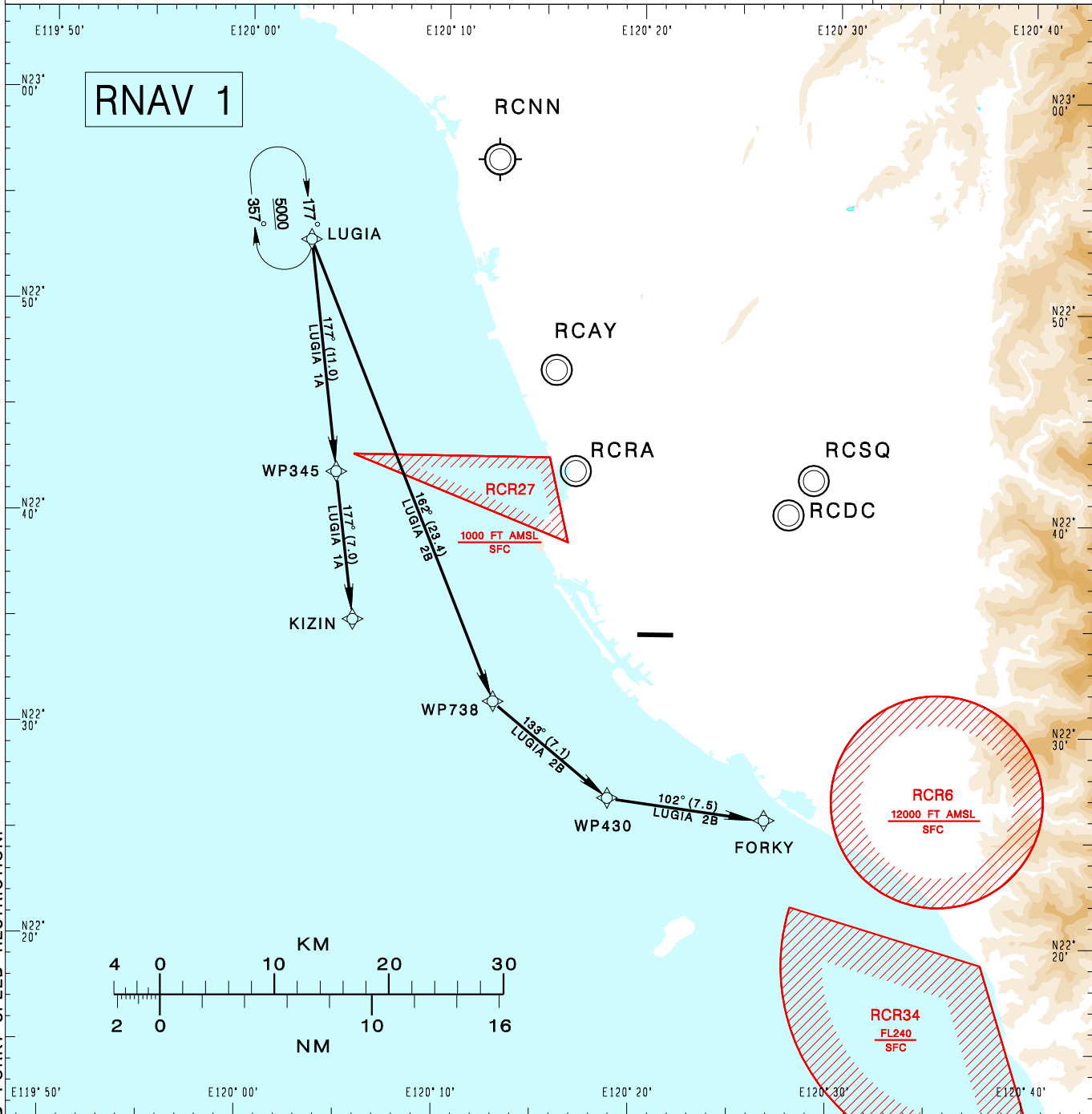


**高雄國際機場**  
KAOHSIUNG INTL AD

RCKH STAR  
LUGIA 1A RNAV(RWY09)  
LUGIA 2B RNAV(RWY27)

|  |                              |                    |                         |                        |                    |  |  |
|--|------------------------------|--------------------|-------------------------|------------------------|--------------------|--|--|
| TAIPEI ACC<br>126.7 129.1  | KAOHSIUNG APP<br>124.7 125.7 | ATIS<br>127.8      | VAR 4° W-2023<br>↑<br>↓ | 12100'<br>MSA ARP 25NM |                    |  |  |
| Apt Elev: 32'  |                              | Trans Level: FL130 |                         |                        | Trans Alt: 11,000' |  |  |
| BEARINGS ARE MAGNETIC; DISTANCES ARE NAUTICAL MILES; ELEVATIONS, HEIGHTS IN FEET |                              |                    |                         |                        |                    |  |  |



CHANGES: UPDATE KIZIN AND FORKY SPEED RESTRICTION.

**LUGIA ONE ALFA RNAV ARRIVAL**  
Depart LUGIA then to WP345, KIZIN.  
Cross WP345 at or above 5,000ft, cross KIZIN at or above 3,000ft.

**LUGIA TWO BRAVO RNAV ARRIVAL**  
Depart LUGIA, then to WP738, WP430, FORKY.  
Cross WP738 at or above 9,000ft, cross FORKY at or above 4,000ft.

**NOTE**  
LUGIA 1A:  
Speed restriction of 210KT  
IAS maximum AT KIZIN.  
  
LUGIA 2B:  
1.Speed restriction of 210KT  
IAS maximum AT FORKY.  
2.ATS surveillance required.